

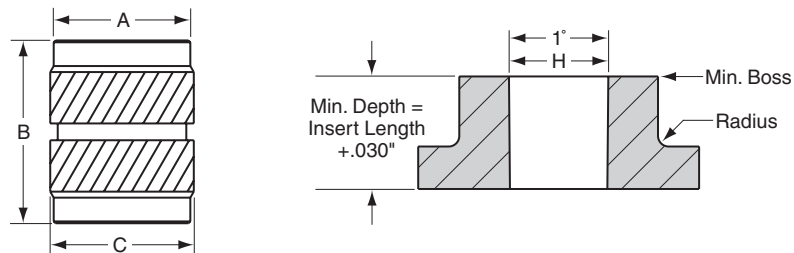


The natural choice for high-volume automatic feeding

Say goodbye to expensive part orientation feeding mechanisms. Our symmetrical inserts can be installed either end first for faster installation and lower costs.

By decreasing outward hoop stress, symmetrical inserts decrease cycle times. Their proportionally engineered design ensures that the displaced material is encapsulated by knurls and undercuts. They are designed for straight hole applications.

Recommended Hole Size – See chart for installation hole size.
Additional information can be found on page 5, Design Guidelines.



INCH		METRIC		A	B	C	Hole H	Min. Boss
Thread Size	Part Number	Thread Size	Part Number	±.004	±.004	±.004	+.003 –.000	
2-56	256 x 115S	M2.0 x 0.4	M20 x 115S [†]	.123	.115	.138	.126	.252
	256 x 157S	M2.0 x 0.4	M20 x 157S	.123	.157	.138	.126	.252
4-40	440 x 226S	M2.5 x 0.45	M25 x 226S	.154	.226	.175	.157	.314
		M3.0 x 0.5	M30 x 226S	.154	.226	.175	.157	.314
6-32	632 x 281S	M3.5 x 0.6	M35 x 281S	.185	.281	.206	.188	.376
8-32	832 x 321S	M4.0 x 0.7	M40 x 321S	.218	.321	.239	.221	.442
10-24	1024 x 375S	M5.0 x 0.8	M50 x 375S	.249	.375	.270	.252	.504
10-32	1032 x 375S			.249	.375	.270	.252	.504
1/4-20	2520 x 500S	M6.0 x 1.0	M60 x 500S	.312	.500	.333	.315	.630
1/4-28	2528 x 500S			.312	.500	.333	.315	.630
5/16-18	3118 x 500S	M8.0 x 1.25	M80 x 500S	.374	.500	.393	.377	.754
5/16-24	3124 x 500S			.374	.500	.393	.377	.754
3/8-16	3816 x 500S	M10 x 1.5	M100 x 500S	.465	.500	.484	.468	.936
3/8-24	3824 x 500S			.465	.500	.484	.468	.936

[†] Non-Stocking Item – Minimum Order May Apply

Stainless Steel Inserts – Class 3A/4H screw must pass with finger torque, standard class go gage may stop on last thread. • Part numbers for Stainless Steel Inserts are the same as listed in the chart, but ending with -SS.