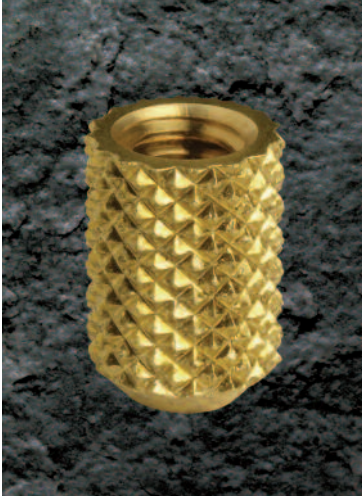


Precision Inserts for "Mold-In" Applications

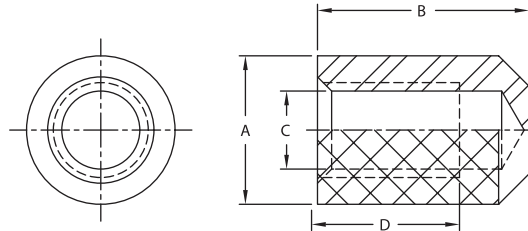
MC Series



Precision Inserts for Closed-End "Mold-In" Applications

Our MC-Series insert is designed to be molded into Plastics, Rubber & Ceramics. The insert is designed with aggressive diamond knurling that provides high resistance to tensile pull and rotational torque loads. It has a closed bottom and a controlled minor diameter which provides for accurate positioning on core pins. The "closed-end" bottom prevents plastic flow into the threads.

MC Series



INCH		METRIC		A	B	C	C	D	D
Thread Size	Part Number	Thread Size	Part Number	±.005	+ .000" - .008"	(INCH) + .002"/- .000" after tapping	(METRIC) + .002"/- .000" after tapping	(INCH) Minimum number of full threads	(METRIC) Minimum number of full threads
2-56	256X187MC	M2.0 x 0.4	M20X187MC	.133	.187	.070	.064	5	5-1/2
4-40	440X250MC	M3.0 x 0.5	M30X250MC	.169	.250	.089	.100	5	7-1/2
6-32	632X312MC	M3.5 x 0.6	M35X312MC	.200	.312	.110	.117	5-1/2	7
8-32	832X344MC	M4.0 x 0.7	M40X344MC	.232	.344	.136	.133	6	6-1/2
10-24	1024X375MC	-	-	.266	.375	.154	-	4-1/2	-
10-32	1032X375MC	M5.0 x 0.8	M50X375MC	.266	.375	.161	.168	6-3/4	6-1/2
1/4-20	2520X562MC	M6.0 x 1.0	M60X562MC	.391	.562	.204	.200	6-1/2	8-1/2
1/4-28	2528X562MC†	-	-	.391	.562	.215	-	10	-
5/16-18	3118X656MC†	M8.0 x 1.25	M80X656MC†	.516	.656	.261**	.267**	6-3/4	7-1/2
3/8-16	3816X750MC†	M10.0 x 1.50	M100X750MC†	.578	.750	.318**	.337**	7	7
1/2-13	5013X937MC†	M12.0 x 1.75	M120X937MC†	.766	.937	.430**	.404**	6-1/2	7

Standard material is Brass, Alloy 360, per ASTM-B16. Additional thread sizes and other materials are available as a special order.

Please contact our Sales or Engineering department for additional information and capabilities.

† Non-Stocking item. Minimum order may apply.

** I.D. Tolerance is +.003" /-.000" for this item.